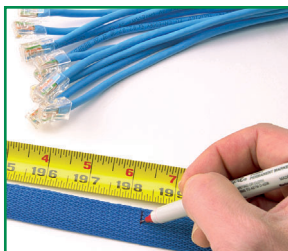


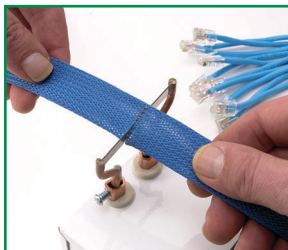
# Cutting To Prevent Fraying



Products displaying this icon should be cut with a hot knife, rope cutter or some other method for cutting and sealing the ends to prevent fraying during the installation and assembly process. We offer an assortment of tools to accomplish this, ranging from heavy duty, high volume devices to portable gas powered units.



Measure the sleeving to length. Keep the sleeving relaxed and don't pull it as you measure. The most accurate method is to measure the sleeving on the actual application. There will be some foreshortening of the sleeving as it expands over large bundles or connectors. Mark the cut line with a pen or marker.



When the knife is hot, slide the sleeving over the cutting blade. Practice on a piece of scrap to get a feel for the procedure. Always cut in a well ventilated area and avoid inhaling the fumes. Both the blade and the cut ends will be **HOT**. Be careful.

While the ends are still hot, use an inverted funnel (needle nose pliers or scissors also work well) to form the end into a soft flare. This will allow the sleeving to easily slide over your application and accommodate plugs or connectors without binding.



To install the sleeving over your application, just push the flared end over the ends of the wires and "walk" the sleeve down the length of the bundle. Once the sleeving is in place, just run your hand over the applied sleeving to smooth it out.



## Compact Hot Knife

25mm blade heats to 600° C in less than 10 seconds. 6" long. Weighs under 4 lbs. Replaceable carbide steel blade. Made in Germany. Available in 110 and 220 volt models.

Compact Hot Knife 110 volt - HKCOMP110  
Compact Hot Knife 220 volt - HKCOMP220



## Bench Mount Hot Knife

Heavy duty components and heavy gauge 2 1/2" blade make this tool ideal for use in production environments. Lighted power switch. Heats to 600° C in 30 seconds. Replaceable blades. 110 volt operation.

Bench Mount Hot Knife - HKBENCH110  
Replacement Knife Blade - RBBENCH110



## Heavy Duty Handheld Hot Knife

German engineered, heavy duty handheld hot knife. Long life trigger switch.

Heats quickly to 600° C. Interchangeable blades. 110 or 220 volt models available.

HD Handheld Knife 110 volt - HKHDHAND110  
HD Handheld Knife 220 volt - HKHDHAND220

## Heavy Duty Hot Knife

Thermostatically controlled electronics heat the 3" carbide blade to 600° C in less than ten seconds and maintain preset temperature indefinitely. Heavy duty, German engineered tool will slice through advanced chemistry polymer sleeving without dragging. Available in 110 or 220 volt models.

Heavy Duty Hot Knife 110 volt - HKHDBENCH110  
Heavy Duty Hot Knife 220 volt - HKHDBENCH220



## Solder-It Hot Knife Kit

When AC power isn't available, this refillable butane powered torch fills the bill for cutting and sealing braided sleeving. Pushbutton ignition, adjustable to 500° C, up to 3 hour capacity and **BONUS** cutting blade attachment.

Butane Hot Knife Kit - HKBUTANE



## Handheld Hot Knife

Perfect for individual projects or small volume production. The large knife blade heats quickly and easily cuts and seals most grades of braided sleeving. Handle can also be used as a soldering gun with the appropriate tips. 110 volt operation.

Hand Held Hot Knife - HKHAND110  
Replacement Knife Blade - RBHAND110